

JVC[®]
PROFESSIONAL

50-INCH PLASMA DISPLAY MONITOR
GD-V500PZU

High-Resolution, Flat Plasma Monitor Delivering
Bright, High-Contrast Picture with Wide Viewing
Angle



PLASMA

- Superb Picture Quality
- 50" Wide Aspect XGA Resolution (1,366 x 768 dots)
- 3000:1 High-Contrast Ratio
- Bright Picture (300 cd/m²)
- Wide Coverage of PC Signals up to U-XGA
- RS-232C Interface
- Wide Range of Optional Accessories

JVC Plasma Display Technology — Now, Bigger is Better

The GD-V500PZU is the latest member of JVC's family of high-performance plasma display monitors. Taking plasma technology another step further translates into a bigger 50-inch display delivering high-resolution of 1,366 x 768 pixels. But, there is more. For the viewer, a contrast ratio of 3,000:1 and a brightness of 300 cd/m² boost your presentation by crystal clear images with exceptional color clarity. And, it's XGA compatible to handle high-resolution graphics. Naturally, the GD-V500PZU is ideal for convention, exhibition and promotional applications in environments with strong ambient or artificial lights. Of course, the GD-V500PZU brings the many benefits unique to Plasma Display, such as immunity to electromagnetic fields. GD-V500PZU — JVC plasma technology taken to a new level.

Standard Accessory

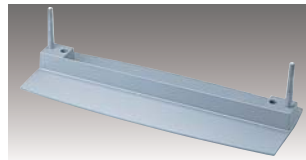


Remote Control Unit

Input Terminals



Optional Accessories



Stand Unit
TS-C50P1G
Dimensions (W x H x D):
19-11/16 x 23-15/16 x 27-9/16 inches
500 x 607.2 x 700 mm

Wall Mount Unit
TS-C50P2G

Ceiling Mount Unit
TS-C50P3G

Side Mount Slim Speakers
TS-C5000SPG

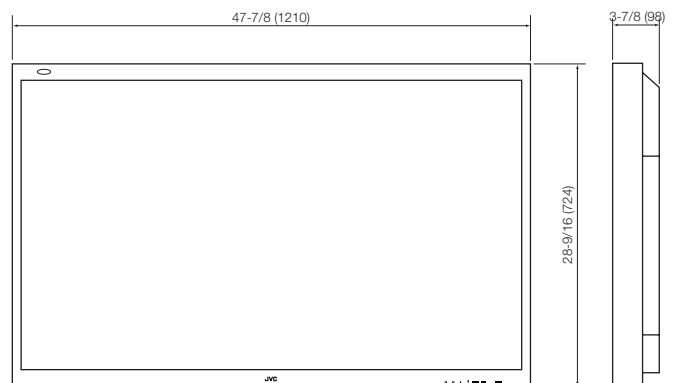
Simple Wall Mount Unit
TS-C50P6G

Specifications

Screen size (W) x (H)	43-9/16 x 24-1/2 inches (1106 x 622 mm) wide 50-inch (diagonal)
Aspect ratio	16:9 wide (width-to-height ratio of screen) 4:3/16:9 selectable
No. of pixels	1366 (H) x 768 (V) dots
Scanning frequency	f(H) 15.75 — 110kHz f(V) 48Hz — 120Hz
Video signals	NTSC, NTSC 4.43, PAL, PAL60, NTSC, SECAM 480/60p, 480/60i, 576/50i, 720/60p, 1080/60i, 1080/50i, 1080/24p
PC preset signals	640 x 480 (60Hz), 640 x 480 (70Hz), 800 x 600 (60Hz), 800 x 600 (75Hz), 1024 x 768 (60Hz), 1024 x 768 (75Hz), 1024 x 768 (85Hz), 832 x 624 (75Hz)
Input connectors	
VIDEO	Composite: 1 V(p-p), 75 ohms, auto-termination
S-VIDEO	Y: 0.7 V(p-p), 75 ohms, C: 0.286 V(p-p)
AUDIO	R/L 2x RCA pins: 0.5Vrms
COMPONENT/RGB	Y/G: 1 V(p-p) PB/CB/B: ±0.35 V(p-p) PR/CR/B: ±0.35 V(p-p) HD: 1.0 - 5.0 V(p-p) VD: 1.0 - 5.0 V(p-p)
AUDIO	R/L 2x RCA pins: 0.5Vrms
PC	mini D-sub 15-pin
AUDIO IN (M3.5 jack)	Stereo mini jack: 0.5Vrms
SERIAL	mini D-sub 9-pin
EMI	FCC Class A
Weight	99.45 lbs. (45kg)
Dimensions (W) x (D) x (H)	47-7/8 x 3-7/8 x 28-9/16 inches 1,210 x 98 x 724 mm
External speaker terminals	6 ohms
Power requirement	120V AC, 50/60Hz
Power consumption	530W (stand-by 2.4W)
Audio output	16W (8W + 8W)
Optional accessories	Stand unit (TS-C50P1G) Wall mount unit (TS-C50P2G) Ceiling mount unit (TS-C50P3G) Side mount slim speakers (TS-C5000SPG) Simple wall mount unit (TS-C50P6G)

Dimensions

Unit: inches (mm)



JVC[®] DISTRIBUTED BY

JVC PROFESSIONAL PRODUCTS COMPANY
DIVISION OF JVC AMERICAS CORP.
1700 Valley Road, Wayne, N.J. 07470
TEL: (973) 315-5000, (800) 582-5825
FAX: (973) 315-5030
Internet Web Site <http://www.jvc.com/pro>
E-mail: proinfo@jvc.com

JVC CANADA INC.
21 Finchdene Square, Scarborough, Ontario M1X 1A7
TEL: (416) 293-1311 FAX: (416) 293-8208
Internet Web Site <http://www.jvcpro.com/>

Design and specifications subject to change without notice.

Printed in Japan
ICN-0247