



PlasmaSync® 42MP2

Multimedia Presentation Series

Best-of-class image quality

NEC's exclusive Capsulated Color Filter™ Technology for extremely realistic color reproduction

Advanced AccuBlend™ scan conversion for excellent high-resolution computer graphics display

Sophisticated video signal processing for smooth, lifelike video

Broad source compatibility – composite, component and S-Video plus HDTV and computer graphics standards up to XGA

NEC's exclusive AccuShield™ Phosphor Protection System

Optimized for multimedia presentations

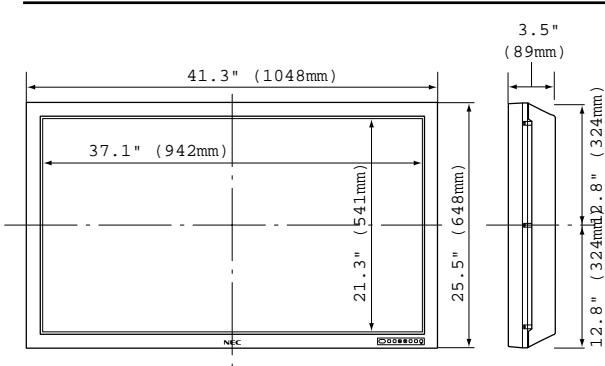
The PlasmaSync 42MP2 is NEC's latest generation of 42" plasma monitor optimized for superior performance in multimedia applications including conference room presentation, boardroom AV presentation systems, videoconferencing, training and broadcast & video production. With outstanding image quality, broad source compatibility, comprehensive input options and built-in audio the 42MP2 is one of the most effective multimedia presentation tools available.

The PlasmaSync 42MP2 is optimized to suit the requirements of multimedia presentation applications with a set of features and capabilities that include:

- Powerful audio capabilities with an internal 7-Watt stereo amplifier and optional external speakers
- Motion-compensated 3D scan converter and 3-2 pull down converter for high quality display of video sources
- Simple and intuitive on-screen menu system with complete control of all monitor functions – accessible from a handheld remote or convenient front-bezel controls.
- Digital zoom that allows you to select a portion of the screen and magnify it up to 3 times to emphasize a point or highlight information
- Complete RS232 external control
- An extended warranty option that provides two additional years of coverage beyond the standard one-year manufacturer's warranty.

Solutions with Vision

PlasmaSync® 42MP2



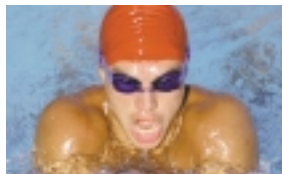
Wired/wireless handheld remote control incorporates all monitor functions.



Optional external speakers are available to provide a seamless audio solution.



Comprehensive input panel with improved cable access includes connections for up to 8 different sources including three assignable audio inputs and a 29-pin DVI connector.



The AccuShield Phosphor Protection System with Inverse RGB mode can remove the perceptible effects of phosphor burn.

Specifications

Model Number	PX-42VM2A	
Diagonal Screen Size	42"	
Screen Aspect Ratio	16 to 9	
Active Screen Area (mm)	921 x 518	
Native Pixel Resolution	853 horizontal dots x 480 vertical rows	
Pixel Pitch	1.08mm	
Contrast Ratio (set)	550:1	
Capsulated Color Filter	Yes	
Output Color	256 RGB levels, 16.7 million colors	
Viewing Angle	160 degrees	
Horiz. Frequency Range	15.6 to 80.5 kHz auto, step scan	
Vertical Frequency Range	50 to 120 Hz auto, step scan	
PC Signal Compatibility	VGA 640x480 @ 60, 72, 75, 85, 100, 120 Hz SVGA 800x600 @ 56, 60, 72, 75, 85, 100, 120 Hz XGA 1024x768 @ 60, 70, 75, 85, 100 Hz SXGA 1280x1024 @ 60 Hz Wide VGA 848x480, 852x480 @ 60Hz Wide XGA 1360x765 @ 60Hz Macintosh 640x480, 832x624, 1024x768	
Video Signal Compatibility	NTSC, PAL, PAL M/N, SECAM, 3.58/4.43 NTSC	
HD Video Signal Compatibility	480p, 480i, 525p, 525i, 540p, 625p, 625i, 720p, 1035i, 1080i	
Input Terminals	RGB 1 (analog)	15-pin mini D-sub
	RGB 2 (analog)	5 BNC (RGB/HV)
	RGB 3 (digital)	29-pin DVI (digital only)
	Composite Video	RCA x 1
	Composite Video	BNC x 1
	S-Video	4-Pin DIN
	Component Video	1 set RCAx3 (Y,Pb,Pr)
	Audio	3 sets RCA stereo + external speaker jacks
Audio	Internal amplifier, 7W x 2 output power	
External Control	9-pin mini D-Sub, RS232	
User Controls	Direct Access	Power on/off, input selection, OSM access (Control Lock switch located on input panel)
	Remote Control	Power on/off, input selection, OSM access, volume, mute, off timer, cursor, pointer, zoom
	OSM	Contrast, brightness, sharpness, color, tint, color temperature, picture mode, noise reduction, bass, treble, balance, vertical position horizontal position, fine picture, picture adjust, auto picture, power management, RGB select, HD select, OSM adjustment, gray level, PLE, reset, frequency ID, language
Plug & Play	DDC1, DDC2B (RGB3 is DDC2B only)	
Power Requirements	120V 50/60 Hz	
Power Consumption	395 W Typical; 590 W Maximum	
Dimensions (WxHxD)	1048 x 648 x 89 mm, 41.3 x 25.5 x 3.5 inches	
Weight	32 kg, 70.6 lbs. (without tabletop stand)	
Environmental Conditions	Operating Temperature	0 to 40 degrees C
	Operating Humidity	20-80%
	Operating Altitude	0 to 6230 ft (1900 m)
	Storage Temperature	minus 10 to 50 degrees C
	Storage Humidity	10-90%
	Storage Altitude	0 to 9840 ft (3000 m)
Warranty	1 Year Parts & Labor Standard	
Regulatory	FCC Classes A, UL1950, CSA950	
Included Accessories	AC Power Cord, User Manual, Remote Control, Remote Control Cable, 15-pin RGB cable, Batteries	

Optional Accessories

Tabletop Stand	PX-42VM1U-ST
Attachable Speakers	PX-42VM1U-S1
Fixed Wall Mount Kit	FWMK
Tilt Wall Mount Kit	TWMK
Ceiling Mount Kit	CMK
Extended Warranty	EXTENDEDWAR33/42

Specifications subject to change without notice.

For more information, call (800) NEC-INFO or visit www.plasma.nectech.com

NEC Technologies and the NEC logos are registered trademarks of NEC Technologies, Inc. All products and technologies mentioned are trademarks or registered trademarks of their respective manufacturers.

NEC Technologies, Inc.
1250 N. Arlington Heights Rd., Suite 500
Itasca, IL 60143-1248
www.nectech.com