



# Samsung Plasma Monitors

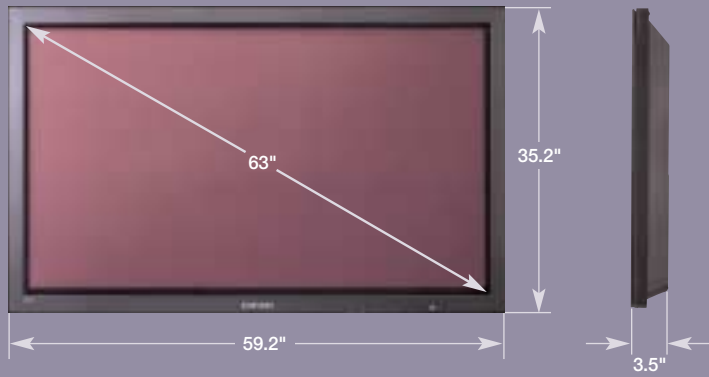
Professional Audio/Video

SAMSUNG

PPM63H3

63" SD

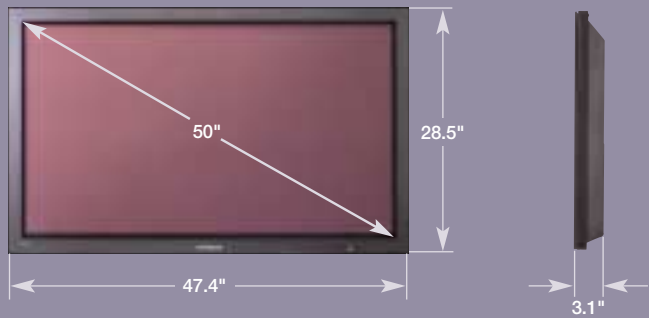
1366 x 768 Resolution



PPM50H3

50" HD

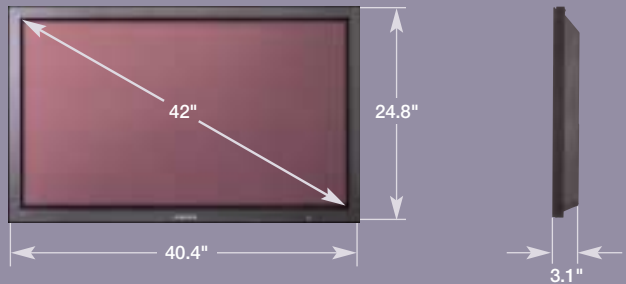
1366 x 768 Resolution



PPM42S3

42" HD

852 x 480 Resolution



# Introducing Digital Natural Image enhancement (DNiE) Technology. Exclusively from Samsung.

DNiE is an exciting new Samsung technology that makes the best plasma displays even better. The detail, contrast, 3D motion and color are, very simply, the best you've ever seen.

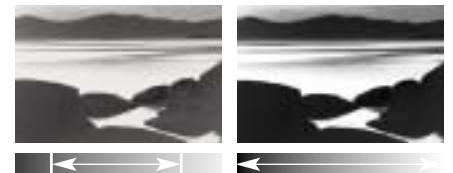
**Detail Enhancer** DNiE renders images that are perfect in every detail, without noise or flicker. Frequency characteristics are improved by natural peaking for natural edge transitions.



Conventional  
Typical Detail

With DNiE  
Extreme Detail

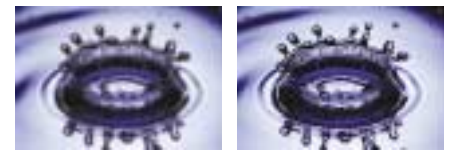
**Contrast Enhancer** A first-ever minute analysis yields an exceptionally dynamic contrast range. Blacks are blacker than ever. Whites are whiter than ever. Overall contrast and brightness are more natural-feeling.



Conventional  
Gray Blacks, Gray Whites

With DNiE  
Black Blacks, White Whites

**3D Motion Optimizer** Three-dimensional analysis eliminates blurring and noise in motion images. Even still images are sharper and clearer.



Conventional  
Motion Blurring and  
Image Tails

With DNiE  
Motion Blurring and  
Image Tails Eliminated

**Color Optimizer** Colors are smooth, pure and natural, not harsh and artificial. Skin tones are beautiful and realistic.



Conventional  
Good, but Not Perfectly  
Natural, Color

With DNiE  
Pure Whites and Natural  
Skin Tones

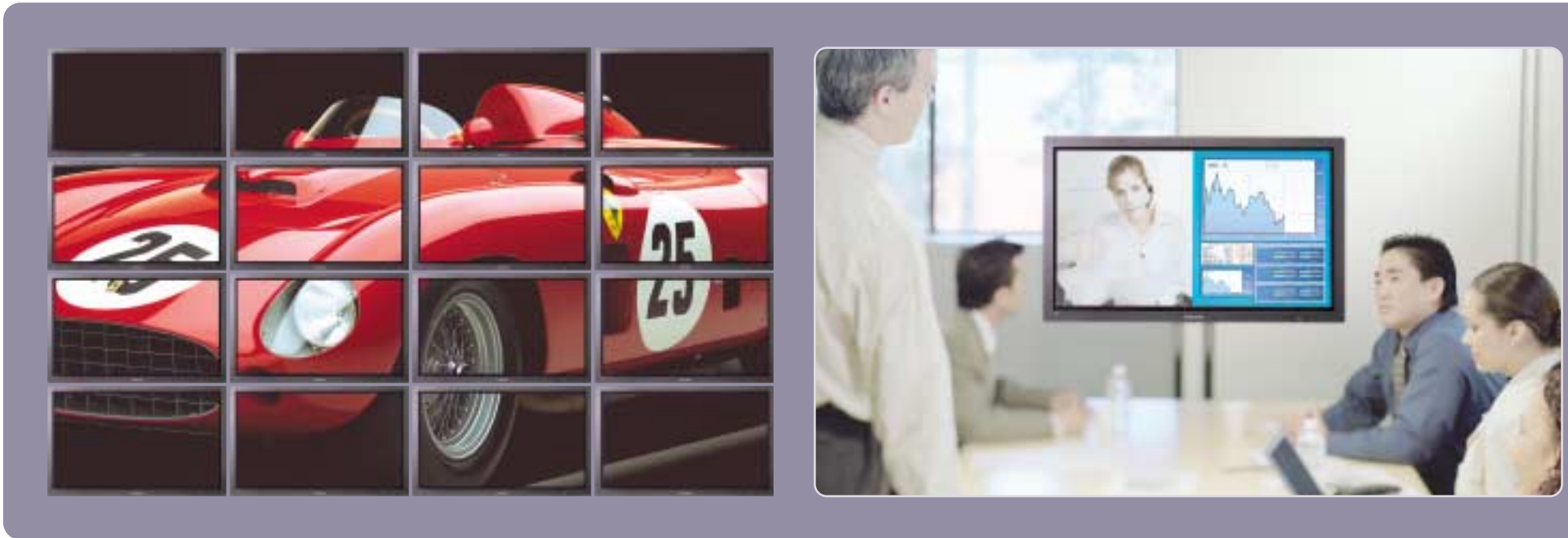


Nothing ruins a good idea  
faster than a bad presentation.

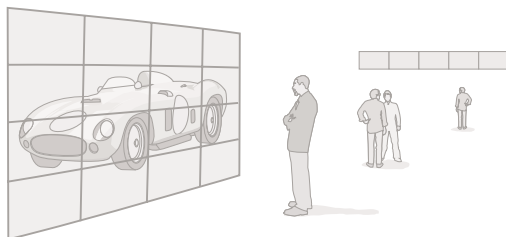
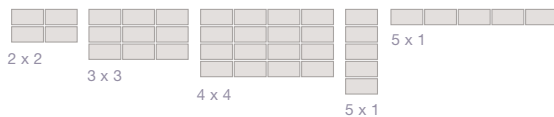
You may be sharing an idea with someone a continent away in a video conference. Or you may be presenting an idea to thousands through a retail display. But in that moment, after all the brainstorming, all the refining, all the execution, nothing is more important than your monitor. Samsung professional plasma displays are designed to help you communicate your ideas with the brightest, sharpest, clearest pictures imaginable. We've incorporated some of our latest, best ideas, like Digital Natural Image enhancement technology. And since ideas aren't confined to a horizontal format, we made our new plasma monitors able to be mounted vertically. This is technology at its finest. Technology that's driven by good ideas. Technology that's all about you and your ideas.



These are a few of the things that separate Samsung professional plasma displays from all others. The result, of course, is unprecedented images and excellent flexibility.

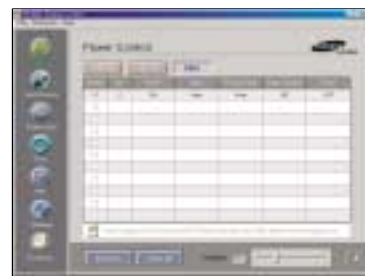


**Video Wall** If one's good, two's better. Or how about 16? Whatever configuration you want is made easier than ever with a built-in processor. Create huge, dynamic displays of 2 x 2 (4), 3 x 3 (9), 4 x 4 (16), 5 x 1 and 1 x 5.



**Picture By Picture** Our 16:9 plasma displays allow large side-by-side images to be displayed simultaneously.

**RS232C Multi Display Control** More control is always good. Especially when it's easy. The built-in RS232C interface lets you control up to 10 units as a single system from your PC. Just open the supplied MDC software, list the units to be controlled, and click on the function you display. It's that simple.



## Accessories

Genuine Samsung accessories are made to fit and work perfectly with your Samsung plasma display.

## Extended Warranty

<b>Tabletop Stand</b> SMM6330	<b>Ceiling Mount</b> CML300	<b>Wall Mount</b> WMN4230/WMN6330	<b>Speakers</b> PSN4230/PSN5030/PSM6330	<b>Vertical Mount</b> VMN4230/VMN6330	Protect your investment. For information, call 1-866-542-7214 or ask your reseller.
----------------------------------	--------------------------------	--------------------------------------	--	--	---

**Vertical Image Capability** Landscape idea or portrait idea? You're not limited with Samsung. Our plasma displays can be mounted either horizontally or vertically. Perfect for electronic signboards.



Our exclusive Signal Pattern Process neutralizes adjacent cell charges to eliminate electrically charged image retention.

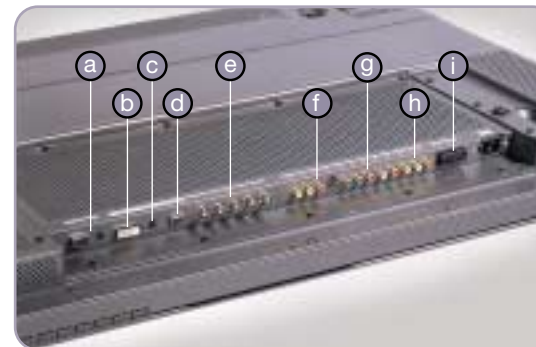
**Anti-Burn Technologies** Long meeting? Want to leave your display on 24/7? No problem. Samsung plasma displays feature multiple anti-burn technologies. Our Auto Pixel Shift keeps the image moving imperceptibly, while our Always White technology combines with our Signal Pattern Process to eliminate electrically charged residual images.

**Higher Brightness and Contrast** Our new technology makes even higher brightness and contrast performance specifications possible, without sacrificing the life of the display.

## Support

Industry-leading technical support and on-site warranty service are provided with your Samsung plasma monitor. Warranty is 3 years, parts and labor. On-site service is usually within two business days. Restrictions may apply.

**Flexible Connectivity** What do you need to display? What source are you displaying it from? Our plasma monitors give you the brightest, richest images from whatever source you need.



- a. RS232C (In/Out)
- b. DVI In
- c. Audio In
- d. RGB 1 (PC 1) In
- e. Component 2/RGB 2 (PC 2) In
- f. Video In
- g. Component 1 In
- h. Video Out
- i. Ext. Speaker (8)

		PPM42S3	PPM50H3	PPM63H3
<b>Product Specifications</b>				
<b>Panel</b>	Diagonal Size Screen Aspect Ratio Pixel Pitch Brightness Contrast Output Color Viewing Angle (H/V)	42" 16:9 1.08 x 1.08 mm 700cd/m <sup>2</sup> (Typical) 1200:1 (Typical) 16.7 Million (256 RGB Levels) 160°/160°	50" 16:9 0.81 x 0.81 mm 800cd/m <sup>2</sup> (Typical) 900:1 (typical) 16.7 Million (256 RGB Levels) 160°/160°	63" 16:9 1.02 x 1.02 mm 700cd/m <sup>2</sup> 1000:1 16.7 Million (256 RGB Levels) 160°/160°
<b>Scanning Frequency</b>	Horizontal Vertical	29.8-75KHz 56-85Hz	29.8-80KHz 56-85Hz	29.8-80KHz 56-85Hz
<b>Resolution</b>	Active Native Resolution Recommended Resolution PC Signal Compatibility Video Signal Compatibility SD/HD Video Output	852 x 480 852 x 480 VGA-WXGA 480i, 480p, 720p, 1080i, C-Video, S-Video and RGB SD	1366 x 768 1366 x 768 VGA-UXGA 480i, 480p, 720p, 1080i, C-Video, S-Video and RGB HD	1366 x 768 1366 x 768 VGA-UXGA 480i, 480p, 720p, 1080i, C-Video, S-Video and RGB HD
<b>Input Terminals</b>		Composite Video – 1 x RCA Component Video 1 – 3 x RCA (Y/Pb/Pr) Component Video 2 – 3 x BNC (Y/Pb/Pr) S-Video – 1 x DIN - 4-Pin DVI – 1 x 29-Pin DVI RGB 1 – 1 x Mini D-Sub 15-Pin RGB 2 – 5 x BNC (RGB/H/V) RS232C – 1 x Mini Jack Audio – 1 x Mini Jack, 2 Sets RCA		
<b>Output Terminals</b>		Composite Video – 1 x RCA Speaker – External Speaker Jack Audio – 2 x RCA (L/R) RS232C – 1 x D-Sub 9-Pin		
<b>External Control</b>		Universal Remote Controller Built-In Keys (Power, Source, Menu, Volume, Select) RS232C (with Daisy Chain Out)		
<b>Special Features</b>		Multi-Layer Anti-Reflection Filter Burn-In Protection (Auto Pixel Shift, Signal Pattern Processor, All White) Multi-Region Color System (PAL, SECAM, NTSC 3.58, NTSC 4.43) 4H Digital Comb Filter Selectable Color Temperature (Normal, Cool1, Cool2, Warm1, Warm2) Selectable Picture Mode (Video: Custom, Dynamic, Standard, Movie; PC: Custom, High, Middle, Low) Multiple Display Control (RS232C) Display Power Management Signaling Digital Noise Reduction Progressive Scan Variable Aspect Ratio (6 Modes: Wide, Panorama, Zoom 1, Zoom 2, 14:9, Normal) Picture In Picture, Picture By Picture Clock Phase Adjustment Real Time Clock, On/Off Timer Digital Zoom, Picture Freeze Built-In Matrix Video Wall Processor (2 x 2, 3 x 3, 4 x 4, 1 x 5, 5 x 1) Vertical Pivot Display DNie Picture Compensation Algorithm		
<b>Ventilation</b>		Selectable Fan Operation		
<b>Operating Condition</b>	Temperature Humidity Altitude	32°-104°F 20-80%, RH, Noncondensing 6500 Feet		
<b>Warranty</b>		1 Year Parts and Labor, On-Site Service		
<b>Safety Regulations</b>		CE, UL1492, UL6500, CSA C22.2, FCC Class B		
<b>Power Requirement</b> <b>Power Consumption</b> <b>Dimension (W x H x D)</b> <b>Weight</b>		100-250V (50/60Hz) 380 Watts 40.4" x 24.8" x 3.1" (Without Stand) 68.3 Lbs. (Without Stand)	100-250V (50/60Hz) 480 Watts 47.4" x 28.5" x 3.1" (Without Stand) 94.7 Lbs. (Without Stand)	100-250V (50/60Hz) 630 Watts 59.2" x 35.2" x 3.5" (Without Stand) 152.1 Lbs. (Without Stand)
<b>Included Accessories</b>		Table-Top Feet, Remote Controller, Power Cable, Speaker Wires, MDC Software, Pivot Software, PC Signal Cable (Analog 15-Pin), MDC Cable, Owner's Instructions		
<b>Optional Accessories</b>	Tabletop Stand Wall Mount Vertical Wall Mount Ceiling Mount Speakers	Included WMN4230 VMN4230 CML300 PSN4230	Included WMN4230 VMN4230 CML300 PSN5030	SMM6330 WMN6330 VMN6330 - PSM6330

