



DESIGNER CONTOUR MANUAL with CSR

Spring Roller-Type Screen

SPECIFICATION DATA

DA-LITE SCREEN COMPANY, INC.
3100 North Detroit Street
Post Office Box 137
Warsaw, Indiana 46581-0137
Phone: 574-267-8101
800-622-3737
Fax: 574-267-7804
www.da-lite.com
e-mail: info@da-lite.com

SUGGESTED SPECIFICATIONS: _____ projection screen(s), _____ (H) x _____ (W), wall or ceiling mounting type. Screen case to be a two piece design made of extruded aluminum. Case to be finished in white, lightly textured powder coat. End caps made of high strength plastic concealing roller ends with integral bearing surface to support roller. To be equipped with Controlled Screen Return (CSR) to control the return speed of the screen into the case. Bottom of fabric shall be mounted into a metal strip in a tubular steel slat finished in baked enamel. Ends of slat shall be protected by plastic caps. To have Matte White, High Contrast Matte White, Glass Beaded, Video Spectra® 1.5, or High Power surface with masking borders standard on flame retardant and mildew resistant fabric. Fabric shall be mounted into a metal strip in a Camlock roller system without tape, glue, staples, or cords so that fabric may be easily replaced yet cannot be pulled from roller.

Matte White, High Contrast Matte White, Glass Beaded and Video Spectra® 1.5: Surfaces will be seamless.

High Power: Horizontal seam required when both dimensions exceed 6'.

VIDEO FORMAT DIMENSIONS

Viewing Area		Nominal Diagonal		Overall Length of Case		Approx. Shipping Wt.	
H x W	Cm	In.	Cm	In.	Cm	Lbs.	Kg
43" x 57"	109 x 145	72"	183	63"	160	25	11.3
50" x 67"	127 x 170	84"	213	73"	185	30	13.6
57" x 77"	145 x 196	96"	244	84"	213	34	15.4
60" x 80"	152 x 203	100"	254	87"	221	35	15.9
69" x 92"	175 x 234	120"	305	99"	251	38	17.2

HDTV FORMAT DIMENSIONS

Viewing Area		Nominal Diagonal		Overall Length of Case		Approx. Shipping Wt.	
H x W	Cm	In.	Cm	In.	Cm	Lbs.	Kg
37-1/2" x 67"	95 x 170	77"	196	73"	185	30	13.6
45" x 80"	114 x 203	92"	234	87"	221	35	15.9
52" x 92"	132 x 234	106"	269	99"	251	38	17.2

DIMENSIONS

Sizes		Overall Length of Case		Approximate Shipping Weight	
H x W	Cm	In.	Cm	Lbs.	Kg
60" x 60"	152 x 152	63"	160	25	11.3
70" x 70"	178 x 178	73"	185	30	13.5
84" x 84"	213 x 213	87"	221	35	15.9
6' x 8'	183 x 244	99"	251	38	17.2
8' x 8'	244 x 244	99"	251	39	17.7

Overall case length dimensions ± 1/4".

Detail dimensional drawings and installation instructions available upon request.

Specifications subject to change without notice.

Letterbox formats and custom sizes available upon request.

WHEN ORDERING, MARK APPROPRIATE SELECTIONS:

Select size from charts above.

Select viewing surface:

- Matte White High Contrast Matte White
 Glass Beaded Video Spectra® 1.5
 High Power

Options:

- No. 6 Wall Bracket – 6" non-adjustable extension brackets.
 No. 11 Wall Bracket – 10" or 14" non-adjustable extension brackets.
 No. 23 Adjustable Wall Bracket – 10", 14", 15-3/4", 18-1/4", 20", or 24" adjustable extension brackets.
 Tilt-Lock for Keystone Elimination (used with extension brackets).
 T-Bar Scissors Clip for drop ceilings.
 Pull Rod.
 No borders (Black masking borders standard).
 Veneer case cover – seven finishes available.
 Graphite case color.

Project: _____

Architect: _____

Phone: _____

Contractor: _____

Phone: _____

Supervisor: _____

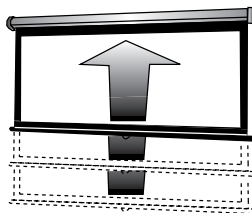
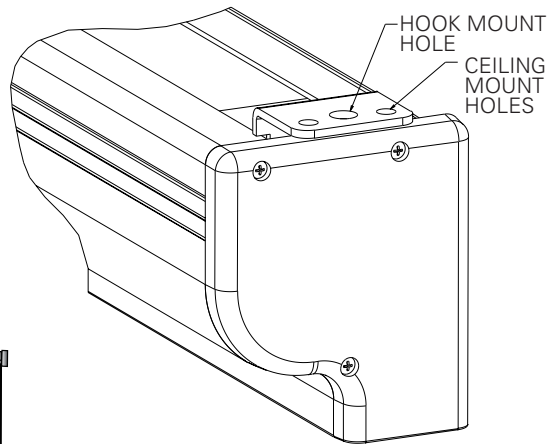
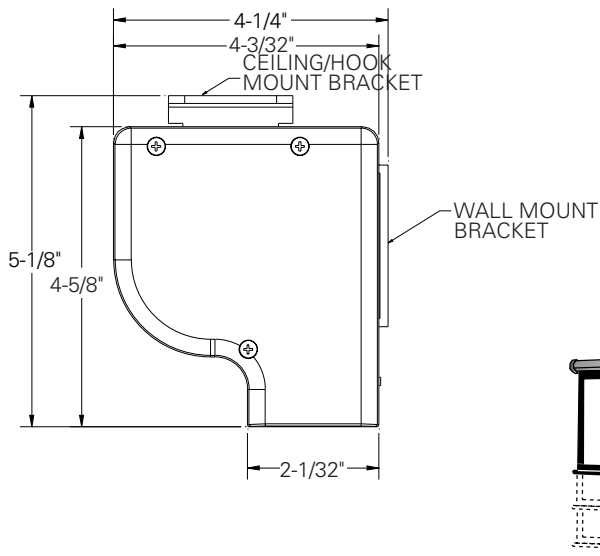
Phone: _____

Supplier: _____

Date: _____

Revised: _____

METHODS OF INSTALLATION

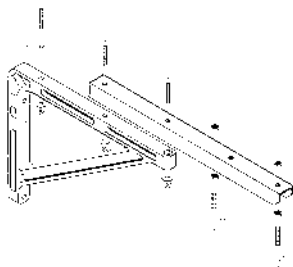


OPTIONAL ACCESSORIES

OPTIONAL ACCESSORIES: to provide chalkboard clearance: Furnish 6" heavy gauge extension wall brackets to mount screen. To provide for keystone elimination: Furnish #11 or #23 adjustable extension wall brackets. Furnish magnetic tilt lock for keystone elimination.

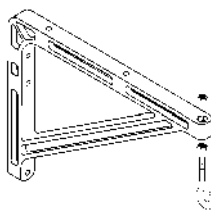
NOTE: Brackets also are used for mounting screen across a corner.

EXTENSION WALL BRACKETS



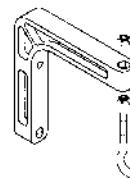
No. 23 ADJUSTABLE WALL BRACKET

Screen can be extended 10", 14", 15³/₄", 18¹/₄", 20" or 24" from wall by wing nut and bolt adjustment.



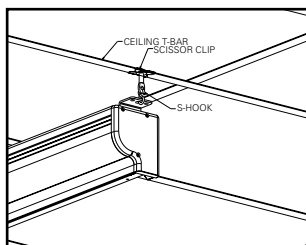
No. 11 WALL BRACKET

Non-adjustable. Permits screen to extend 10" or 14" from wall.

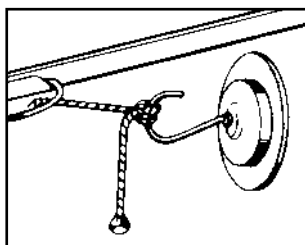


No. 6 WALL BRACKET

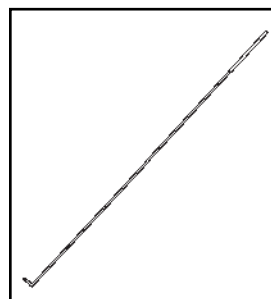
Non-adjustable. Permits screen to extend 6" from wall.



T-BAR SCISSORS CLIP



TILT LOCK for Keystone elimination. Used with extension brackets or T-Bar Scissor Clips.



PULL ROD

Zinc plated rod with black plastic handle grip allows easy access to screen when mounted out of reach. Also can be used as a pointer.