



**FLATRON™ Plasma**

MU-60PZ10B



## Plasma Display

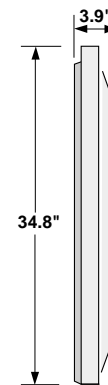
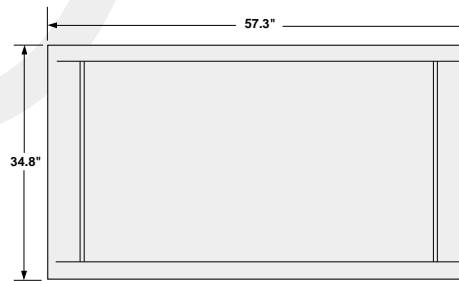
- Screen Size: 60" (16:9)
- Thickness: 3.9"
- Resolution: 1280 x 720
- Brightness: 200cd/m<sup>2</sup>
- Picture in Picture Function
- Viewing Angle Over 160°

[www.LGeus.com](http://www.LGeus.com)

**FLATRON™ Plasma**

# MU-60PZ10B

Screen Type/Size	Plasma/60" Diagonal
Video Aspect Ratio	16:9
Native Display Resolution	1280 x 720 (HD/XGA)
Cell Pitch (H x V)	0.343 x 1.032 mm
Displayable Colors	16.77 million
Peak Brightness	200cd/m <sup>2</sup> (w/o filter: 400cd/m <sup>2</sup> )
Contrast Ratio	250:1 (w/o filter: 500:1)
Viewing Angle	Over 160°
Input Freq. Range	For PC: Autoscanning Hf: 31.5~80KHz Vf: 56~120Hz
Max Input Resolution	For PC: 1280x1024@75Hz
HD/DVD/DTV Support	480i/480p/720p/1080i
Input Terminals	
PC and RGB DTV / Audio	D-Sub 15 (VGA type) / RCA phono jacks
Video/Audio	NTSC composite (RCA phono jacks)
S-Video	Mini DIN 4-pin
Component/DVD/DTV	RCA jacks Y, Pb/Cb, Pr/Cr
Output Terminals	Speaker: 10W+10W (8 ohms)
Power Requirements	AC120V, 60Hz
Power Consumption	650W (Max. Audio: 700W)
Monitor Controls	Power (Main and Stand-by) Input Select, Volume +/-
Remote Control Functions	Power, Input Select, APC, DASP, ARC, Still, PIP, Twin Picture, PIP Input, Position, Menu, Mute, Sleep, Vol+/-, Select +/-, OK(enter)
On Screen Controls	Picture (APC, Digital Reality Picture, Contrast, Brightness, Tint, Color, Sharpness), OSD Transparency Sound (Digital Auto Sound DASP, Auto Volume Level, Treble, Bass, Balance), ARC (Picture format of 16:9, 4:3 or Zoom), Screen (PC adjustments for Auto config, V-position, H-position, phase, reset), Language (English, French, Spanish, Portugese), PIP (small, large, input, position), Twin Picture on/off, Input (RGB(PC)/Video/Component)
Dimensions (W x H x D)	57.3 x 34.8 x 3.9 inches, (1455 x 883 x 99 mm) set only
Shipping Dimensions (W x H x D)	66.2 x 44 x 23.4 inches, (1681 x 1118 x 594 mm)
Weight	158.4 lbs. (72KG) set only
Shipping Weight	180.4 lbs. (82KG)
Operating Temperature	32°F~104°F (0°C~40°C)
Operating Humidity	30%~80%
EMI Regulations	FCC Class B for EMC
Safety Regulations	C-UL
Accessories	Remote Control, D-Sub 15 pin PC VGA cable, Power Cord, User's Manual
Other Features	3D motion adaptive scan converter minimizes jaggies on angled lines Film mode for proper handling of 3:2 pulldown material ISM feature to minimize image burn Picture in Picture function Twin Picture (side by side) Still function (freeze current image)
Mounting Options	Desktop Stand, Floor Stand, Wall Mount, Ceiling Mount
UPC#:	719192164727



**FELATRON™ Plasma**



**LG ELECTRONICS U.S.A., INC.**

**HEADQUARTERS**

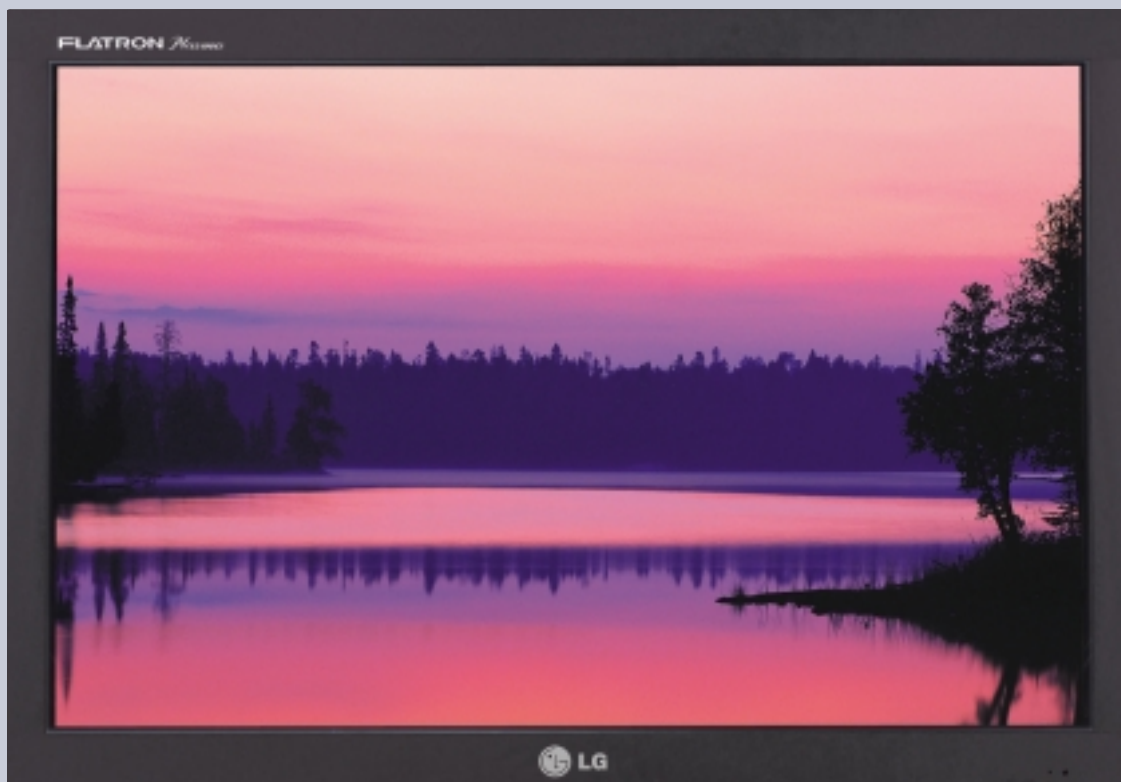
1000 Sylvan Avenue, Englewood Cliffs, NJ 07632 Tel: (201) 816-2000, Fax: (201) 816-0636 [www.LGeus.com](http://www.LGeus.com)

© 2001 LG Electronics U.S.A., Inc. All trademarks are the property of their respective owners. Design and specifications subject to change without notice. The Energy Star emblem does not represent EPA endorsement of any product of service. Printed in USA, 08/01



**FLATRON™ Plasma**

MU-40PA10B



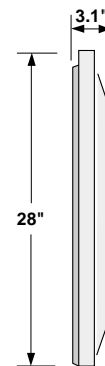
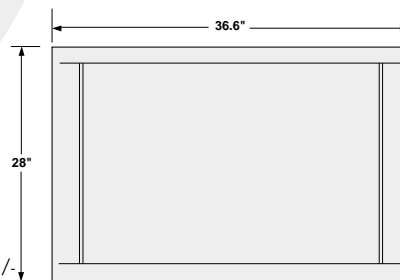
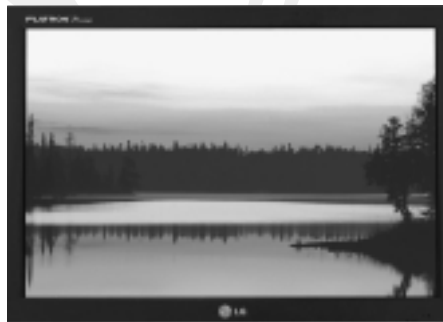
Plasma Display 40"

- Screen Size: 40" (4:3)
- Thickness: 3.1"
- Resolution: 640 x 480
- Brightness: 330cd/m<sup>2</sup>
- Viewing Angle Over 160°

**FLATRON™ Plasma**

# MU-40PA10B

Screen Type/Size	Plasma/40" Diagonal
Video Aspect Ratio	4:3
Native Display Resolution	640 x 480 (VGA)
Cell Pitch (HxV)	0.42 x 1.25mm
Displayable Colors	16.77 million
Peak Brightness	330cd/m <sup>2</sup> (w/o filter: 750cd/m <sup>2</sup> )
Contrast Ratio	500:1 (w/o filter: 660:1)
Viewing Angle	Over 160°
Input Freq. Range	For PC: Autoscanning Hf: 31.5~65KHz Vf: 56~120Hz
Max Input Resolution	For PC: 800x600 (SVGA) @85Hz
HD/DVD/DTV Support	480i/480p/720p/1080i
Input Terminals	
PC and RGB DTV / Audio	D-Sub 15 (VGA type) / RCA phono jacks
Video/Audio	NTSC composite (RCA phono jacks)
Component/DVD/DTV	RCA jacks Y, Pb/Cb, Pr/Cr
Output Terminals	Speaker: 10W+10W (8 ohms)
Power Requirements	AC120V, 60Hz
Power Consumption	352W Max.
Monitor Controls	Power (Main and Stand-by) Input Select, Volume +/-
Remote Control Functions	Power, Video/PC Select, 0-9 keys, Menu, System Off, Closed Caption, Mute, Sleep, Vol+/-, Select +/-, Enter
On Screen Controls	Picture (APC, Contrast, Brightness, Tint, Color, Sharpness), Sound (Digital Auto Sound DASP, Treble, Bass, Balance), Screen (PC adjustments for Auto Config, V-position, H-position, phase, reset), Language (English, French, Spanish), Time, On/Off Timer, Sleep Time, Auto Off, Closed captioning/text, Parental Control
Dimensions (W x H x D)	36.6 x 28 x 3.1 inches, (930 x 711 x 78 mm) set only
Shipping Dimensions (W x H x D)	45.5 x 37.2 x 23.4 inches, (1156 x 946 x 594 mm)
Weight	72.6 lbs.(33KG) set only
Shipping Weight	94.6 lbs.(43KG)
Operating Temperature	32°F~104°F (0°C~40°C)
Operating Humidity	30%~80%
EMI Regulations	FCC Class B for EMC
Safety Regulations	C-UL
Accessories	Remote Control, D-Sub 15 pin PC VGA cable Power Cord, User's Manual, 2 AA type batteries
Other Features	ISM feature to minimize image burn
Mounting Options:	Desktop Stand, Floor Stand, Wall Mount, Ceiling Mount
UPC#:	719192164710



ELATRON™ Plasma



**LG ELECTRONICS U.S.A., INC.**

**HEADQUARTERS**

1000 Sylvan Avenue, Englewood Cliffs, NJ 07632 Tel: (201) 816-2000, Fax: (201) 816-0636 [www.LGus.com](http://www.LGus.com)

© 2001 LG Electronics U.S.A., Inc. All trademarks are the property of their respective owners. Design and specifications subject to change without notice. The Energy Star emblem does not represent EPA endorsement of any product of service. Printed in USA, 08/01