



the **power** is in the
picture

The Showcase Series™
HT1000™ entertainment
projector.

Empowered by Innovation

NEC

A photograph of three men sitting on a couch, cheering enthusiastically. The man on the left is wearing a red long-sleeved shirt and has his mouth wide open in a shout. The man in the middle is wearing a blue denim jacket over a white t-shirt and is also shouting with his mouth open. The man on the right is wearing a light blue button-down shirt and is holding a yellow bowl of chips, looking towards the camera with a wide, excited expression. The background consists of vertical blinds.

extreme contrast makes all the
difference...



“ The HT1000 looks like an outstanding achievement. Contrast is leading edge for digital projectors, and color looks dead-on accurate. Even S-video from a cheap DVD player looks stunning..... Overall, for the money it is the best single-chip DLP projector I've yet seen. ”

Evan Powell, Projector Central

NEC's new **HT1000** entertainment projector will make the ordinary, extraordinary, by turning your family room into an entertainment extravaganza. From cable TV and HDTV to video games, computers, digital pictures and DVDs, the HT1000, with screen sizes up to 200", gives you the ultimate sensory experience.

You'll see deeper blacks, richer details and more vibrant images. NEC's phenomenal 3000:1 contrast ratio is more than double that of other home entertainment projectors allowing you to create a picture you will feel in your body and soul!

3-D Reform™ technology lets you set up your projector virtually anywhere in the room and still get an aligned image. And it's extremely quiet at <29dB in EcoMode™, so you'll hear the movie, not the projector.

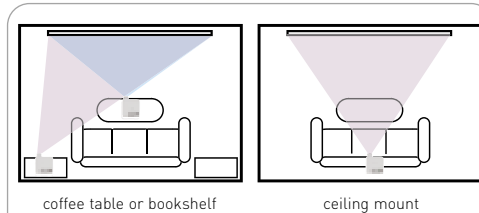
Whether you want to display 1.85:1, 2.35:1, 16:9 or 4:3 aspect ratios, the HT1000's technology supports them all. It's easy to set up and operate and comes with a full-function remote, so you can just sit back and enjoy the show.

From the lens to the connector panel our environmentally friendly projectors are precision crafted for performance, quality and long-term reliability. Should a need arise, rest assured that NEC will be there with award winning service and support.

...the showcase series **HT1000** projector is the new way to entertain



up to 3000:1
contrast ratio
with NEC exclusive
variable IRIS



3D Reform lets you place the HT1000 anywhere in your room, on the coffee table, on a bookshelf or even have it installed on the ceiling

NEC core technologies

Variable IRIS

SweetVision™

3D Reform

Faroudja® DCDi™

Enhanced 3D 10-bit video decoder

EcoMode

Digital photo viewer

phenomenal optical contrast with variable IRIS

Achieve the highest contrast ratio available today in an entertainment projector — up to 3000:1. The variable IRIS allows you to fine-tune the image contrast for even more pizzazz.

additional digital contrast enhancement with SweetVision

Through this proprietary chip based technology, images are more vibrant, colors more realistic and blacks richer with detail. It draws you into the action.

3D Reform

Set up your projector just about anywhere and get an aligned image. 3D Reform enables you to adjust the image horizontally, vertically and diagonally to square the picture. And, vertical image shift allows you to position your image at the top of the screen no matter what the aspect ratio.

Faroudja® DCDi™

Produces images that appear smooth and natural by eliminating jagged edges that appear when standard interlaced video is viewed.

enhanced 3D 10-bit video decoder

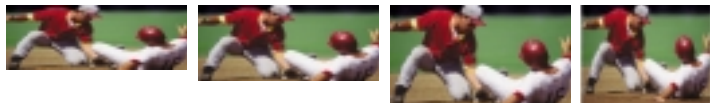
Designed by NEC, this technology offers black level expansion and adaptive gamma correction which further expands contrast and enhances color and skin tone accuracy while reducing video noise.

EcoMode

When you use EcoMode, you save energy and can increase lamp life by a whopping 25%. In addition, EcoMode is quiet so you hear the movie, not the fan noise.

digital photo viewer

Enjoy digital photos stored on your PC or CompactFlash™ card with family and friends by sharing your larger than life images on the big screen.



2.35

1.85

16:9

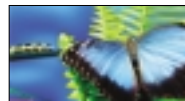
4:3

examples of some of the display options available

display virtually
any aspect ratio
on your 4:3 or
16:9 screen



4:3 image
on 16:9 screen



full screen 16:9
display of 4:3 input

special features

easy to operate and easy to install

With the quick connect guide, color coded inputs, minimal buttons, built in speakers and a full function remote, you'll set-up and start watching your shows quickly.

connect to virtually any device

With an extensive input panel, you can connect to your DVD, VCR, computer, video games and more. In addition, sit back and relax when you turn your projector on or off. With the HT1000 screen trigger connector you can have the screen automatically raised or lowered if your screen incorporates this type of input.

connect to your home network

With an optional networking card maintain control and monitor your projector from your computer.

see your images the way they were meant to be seen

With the most comprehensive aspect ratio control, view TV at 4:3, watch your movies and DVDs in their native 16:9, 1.85:1, 2.35:1 format and HDTV all on the big screen.

smart security

The built-in security features such as password protection, control panel lock and Kensington lock slot will give you piece-of-mind.

entertainment that transforms your everyday experience

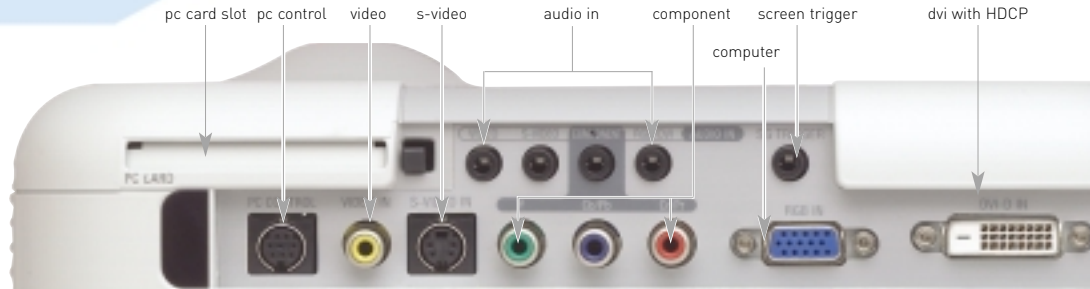
- Watch DVDs and videos
- Watch TV, cable TV, satellite TV, HDTV
- Show home movies
- Surf the web
- Play video games
- View digital pictures and slides
- Use outdoors for neighborhood gatherings
- Display sporting events
- Karaoke
- Experience entertainment like never before!

purchase with confidence

NEC, the leader in warranty and service programs, gives you the most extensive coverage with 2 years parts and labor with extended coverage available.

fill a 16:9 screen with a 4:3 image and still maintain a natural look without black bars

connect virtually any video, computer or audio source



Optical

Panel	Single chip 12 degree DMD
Resolution	Multi resolution 1024x768 XGA: 1024x576 wide mode Advanced AccuBlend compatible
Lens	Manual zoom, manual focus and manual IRIS, F=2.5-3.7, f=22.4-27.0mm
Light Output	1000 standard, 800 eco-mode (ANSI, typical)
Lamp Life (up to)	Eco-mode: 2000H; Normal mode: 1500H
Contrast Ratio	3000:1 with variable IRIS & SweetVision Technology, >2000:1, std.
Image Size	40 - 200 inches diagonal

Electrical

Inputs	1 DVI-D, 1 RGB, 1 S-Video, 1 Video, 1 3-RCA Component Video, 1 PC Card, 4 Stereo Mini Audio
Outputs	1 Screen Trigger, 1 PC Control
Video Compatibility	NTSC, NTSC4.43, PAL, PAL-M, PAL-N, PAL-60, SECAM, HDTV: 1080p, 1080i (24SF support), 720p, SDTV: 576p, 576i, 480p, 480i
Horizontal Resolution	NTSC, NTSC4.43, PAL/PAL-M/PAL-N/PAL-60 – 540 TV lines SECAM - 300 TV lines, Y/Cb/Cr –540 TV lines, RGB -1024dots (H) x 768dots (V)
External Control	RS232 (AMX/Crestron compatibility), LAN
Sync Compatibility	Separate Sync / Composite Sync / Sync on G
Built-in Speakers	2Wx2 with 3D Stereo
Fan Noise	Eco-Mode <29; Normal mode <32
Power Requirements	100-120VAC/200-240VAC, 50/60Hz
Input Current	3.2A (100-120VAC), 1.6A (200-240VAC)
Power Consumption	290W, 8W in standby

Mechanical

Installation	Orientation: Floor/Front, Floor/Rear, Ceiling/Front, Ceiling/Rear
Dimensions (WxDxH)	10.24x12.56x4.72", 260x319x121mm (including protrusions)
Net Weight	7.1 lb. (3.2 Kg)
Environment	Operational Temp. 41 to 95°F / 5° to 35°C Humidity: 20-80% non-condensing Storage: 14° to 122°F / -10 to 50°C
Accessories	Users manual, wireless addressable remote control, D-sub signal cable, audio cable, composite video cable, s-video cable, component video cable, carrying bag, quick connect guide, registration card
Warranty	Registered owners receive a 2-year limited, parts and labor warranty. The lamp when used under normal operating conditions is covered for 1000 hours or 6 months, whichever comes first.

Product/Accessories

Order Code	Description
HT1000	HT1000 entertainment projector
LT60LP	Replacement lamp
LT200CM	Ceiling mount kit
TRAVELPRO200	Executive faux leather rolling case for projector and laptop
ATAPRO200	ATA shipping case
ADP-CV1	Component video adapter
LTSCREEN	50" diagonal table top screen in compact carrying case
HT2IC	2 year limited concurrent 5 business day InstaCare repair and return warranty coverage that supplements existing 2 year limited parts/labor standard warranty
HT3IC	3 year limited inclusive warranty coverage option for parts/labor and InstaCare 5 business day repair and return coverage



For more information, call **(800) NEC-INFO** or visit **www.necvisualsystems.com**

NEC is a registered trademark of NEC Corporation. All other trademarks are the property of their respective owners.
All specifications subject to change without notice.

NEC Solutions (America), Inc. Visual Systems Division • 1250 Arlington Heights Rd., Suite 500 • Itasca, IL 60143-1248

NEC 080215