



The easy way to increase the impact and usefulness of plasma displays



PLASMA TOUCH SCREEN DEVICE

**PDK-50HW2**



PLASMA TOUCH SCREEN DEVICE  
**PDK-50HW2**

Plasma displays are a great way to present information, and now there's a powerful tool that makes them even more effective. The PDK-50HW2 turns the display into a touch panel, ideal for a wide range of applications. You can also use your finger or a dedicated pen to write and draw right over whatever is shown on the display — add comments, highlight information, cross out

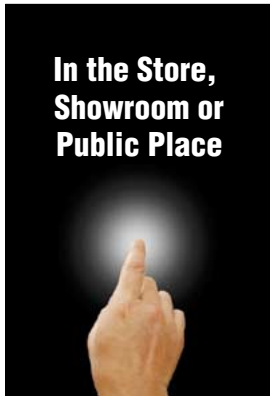
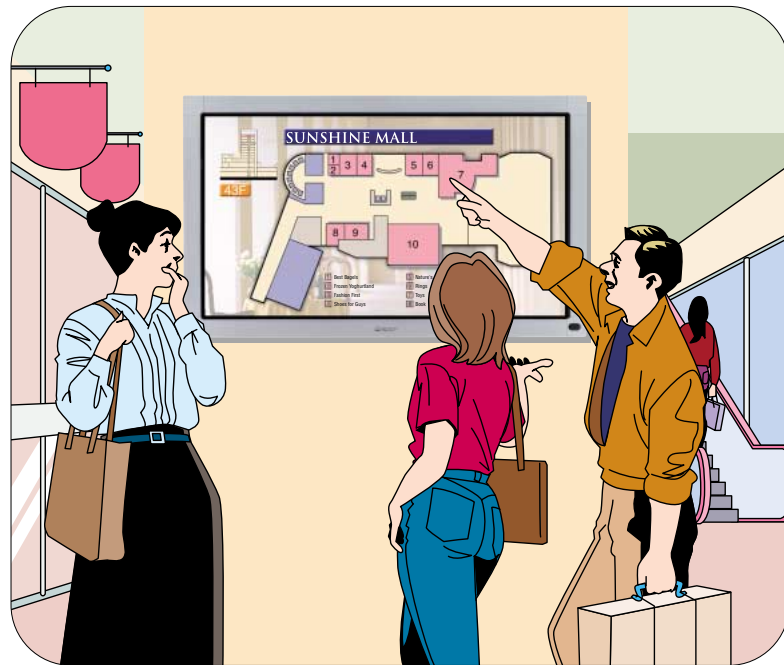
## Turn plasma display panels into convenient and accurate touch panels for all types of applications.

parts, and make changes. Presentations, lectures, meetings, etc. become much more interactive and efficient. Installation is fast and operation is easy — get a PDK-50HW2 and expand the potential of your plasma display.



### Presentations/ Meetings

Presentations and meetings will be more persuasive and effective when you can open and close files, add handwritten input, and so on without moving from the display. Use comments, arrows, circles, and so on to emphasize important points as you speak. Jot down opinions and comments expressed during a meeting or teleconference.



### Promotions/ Information Board

The touch panel function allows the display screen to be utilized as an information board at public facilities and other venues. Or transform point-of-purchase advertising to a striking visual display by using the screen to promote products. As an information tool, unlimited volumes of data regarding sightseeing, events, etc. are available to people simply by touching the screen. Operation is simple and information is easy to read, thanks to the plasma display's super-high quality and the performance of the PDK-50HW2.



High-speed infrared scanning system offers optimal performance with high-precision PDP-503CMX Plasma Display.

- Infrared system does not interfere with bright, clear PDP images.
- \* PDP surface is not covered, thus no luminance degradation, focus blurring or parallaxing occurs.
- Resolution above WXGA (1280 x 768)
- High-speed response function handles handwritten input.



**Pioneer system**  
 Nothing is in front of the display, so there is no image degradation.



**Other systems**  
 Because a screen is placed in front of the display, the image degrades due to parallaxing.

### No calibration required

- Stable, no drift, no calibration.
  - \* Pen coordinates do not slip, even if used for long periods of time. Ideal for use as permanent installation in shops, public facilities, etc.
  - High reliability. No slippage in calibration when PDP is moved.
- Note: Only necessary at initial setup or when PC output resolution is changed.

### Easy installation, flexible layout

- Easy installation: installation area equivalent to that of the PDP-503CMX and weight of only 5.5kg.\*
- \* Total weight of device and pen stand.
- Compatible with various installation methods for Pioneer standard equipment.
- Easy setup, just connect to data source devices via the RS-232C terminal.
- \* Mobile Cart, wall-mount and ceiling-mount installation are available.

### Dedicated handwriting pen included

- In addition to finger-touch operation, a dedicated pen is provided for natural handwritten input.
- Dedicated pen incorporates mouse button feature (left, right, middle), allowing it to be used intuitively for operation of various PC applications.
- \* Roll prevention, battery-check function and loop string attachment included.



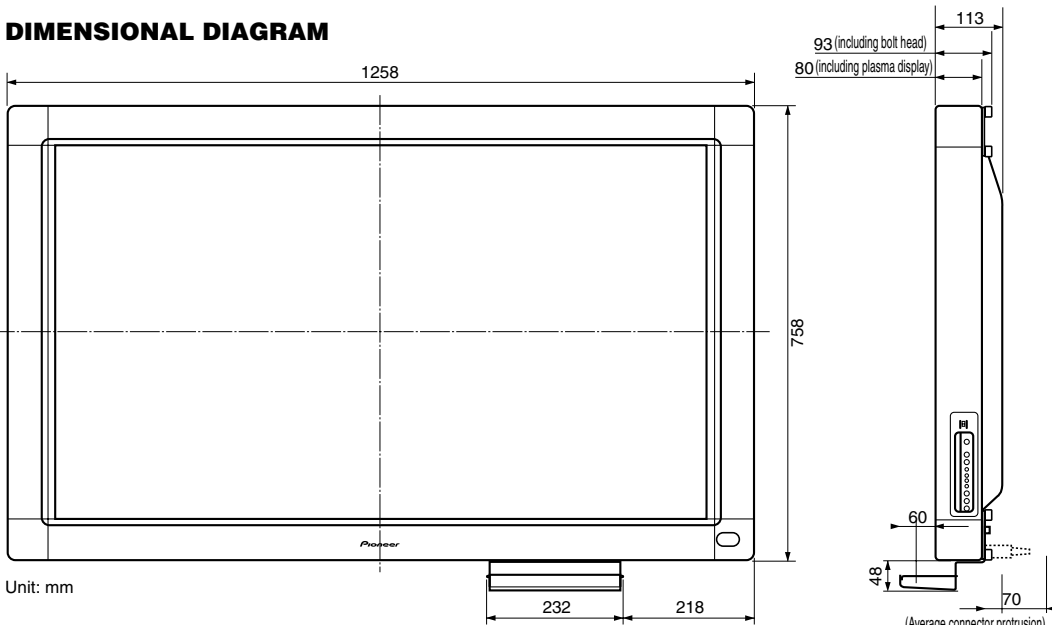
### Custom driver software

- Custom driver software for wide-ranging compatibility: Windows98/ME/NT (SP4)/2000 (Professional)/XP (Home Edition/Professional Edition).
- The custom driver enables optimal, high-speed management of scanned coordinate data and easy operation of various applications via pen or finger-based input using only an RS-232C connection.
- Vast display resolution range. In addition to the recommended resolution of 1280 x 768, projection of resolutions from VGA to UXGA is also possible. Also compatible with various operating systems, applications and contents.

Handwriting software is not provided with this device. For handwriting applications, please purchase commercially available software.



## DIMENSIONAL DIAGRAM



## SPECIFICATIONS

### (MAIN UNIT)

Scanning system	Infrared scanning
Resolution	1280 x 768
Input connectors	DC-IN jack (6V, 1A)
Communication connector (RS-232C)	9-pin D-sub
Power switch	Rocker type
Power indicator	LED
Power	AC100 - 240V, 50/60 Hz
Power consumption	8-13W(100-240V)
Input method	Finger or dedicated pen
Driver software	CBdrv
External dimensions (including plasma display, excluding pen stand)	1,258(W) x 758(H) x 113(D) mm
Weight (excluding plasma display and pen stand)	5.9 kg

### (DEDICATED PEN)

Transmission	Ultrasonic wave
Operation switches	Pen tip (x1), Body (x2)
Power	AAA (LR03) alkaline battery x 1
External dimensions (W x L)	27 x 182 mm
Weight (including battery)	55 g

## SYSTEM REQUIREMENTS

### Supported Hardware

Setup	IBM PC-AT Compatible
CPU	More than MMX233MHz
Video card	Recommended 1280 x 768(Wide XGA) supported products
Display	PIONEER PDP-503CMX/MXE Plasma display
HDD	Only CBdrv main part is at the installation time. About 6MB

### Supported Operating System

Microsoft Windows 98 Second Edition  
 Microsoft Windows Millennium Edition  
 Microsoft Windows NT 4.0 Workstation (SP3 or later)  
 Microsoft Windows 2000 Professional  
 Microsoft Windows XP (Professional/Home Edition)

## ACCESSORIES

- Pen •Replacement pen tips (2 pcs) •Pen stand
- Self-adhering fastener tape sets •RS-232C cable (3 m)
- AC adapter •Power cord •Driver software disc

## PDP-503CMX SPECIFICATIONS

(PDP-503CMX sold separately.)

Effective screen size (W x H)	1098.2 x 620.5 mm
Aspect ratio	16:9
Number of pixels	1280 (Hor.) X 768 (Ver.)
Video input	RGB signal (G on Sync compatible) Mini D-sub 15-pin (female)
Video output	RGB signal (G on Sync compatible) BNC x 5 Mini D-sub 15-pin (female) 75 ohm w/buffer
Audio input	Stereo mini, L/R
Audio output	Stereo mini, L/R
Speaker output	L/R : 8 - 16 ohm/2W + 2W (8 ohm)
Power requirements	AC 100-120V±10%, 50/60Hz (3.8-3.1A)



\*Specifications and appearance may change without notice.

### Note

"Windows" is a registered trademark of the Microsoft Corporation in the U.S. and other countries.  
 "MMX" is a registered trademark of the Intel Corporation.  
 Other company names and product names are registered trademarks or trademarks of each company.

## OPTIONS



**PDK-5011 HANG ON WALL UNIT**



**PDK-5012 CEILING MOUNT KIT**

\*For more details, contact one of the addresses below.

### Visit our websites:

- PIONEER CORPORATION <http://www.pioneer.co.jp/>
- PIONEER ELECTRONICS (USA) Inc. <http://www.pioneerelectronics.com/>

# Pioneer

### PIONEER CORPORATION

4-1, Meguro 1-chome, Meguro-ku, Tokyo 153-8654, Japan TEL: 81-3-3495-6729 FAX: 81-3-3490-2785

### PIONEER ELECTRONICS (USA) INC.

2265 East 220th Street, Long Beach, CA 90810, USA TEL: 310-952-2000 FAX: 310-952-2639

### PIONEER HIGH FIDELITY TAIWAN CO., LTD.

13FL No. 44 Chung Shan North Road Sec.2. Taipei, Taiwan TEL: 886-2-2521-3588 FAX: 886-2-2511-4888



Printed on Recycled Paper